



NP Freight Car Lettering, Slogans & Monads, Part 1

NPRHA Wallace Convention, September 2016

Dean O'Neill

w/Rick Leach

Lots of Images

- All but one drawing from the George Simonson collection (soon donated to NPRHA)
- Providers of images in this deck have rights
- Limited copies of this deck provided for personal research purposes only

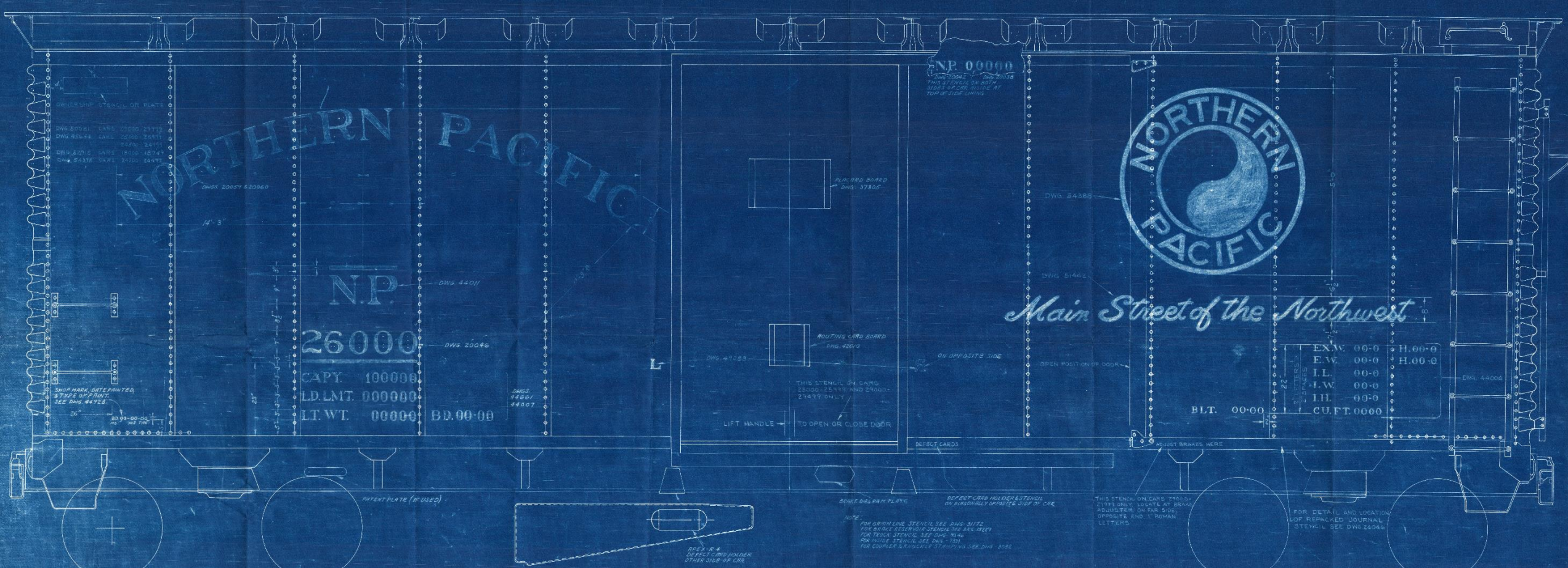


Agenda

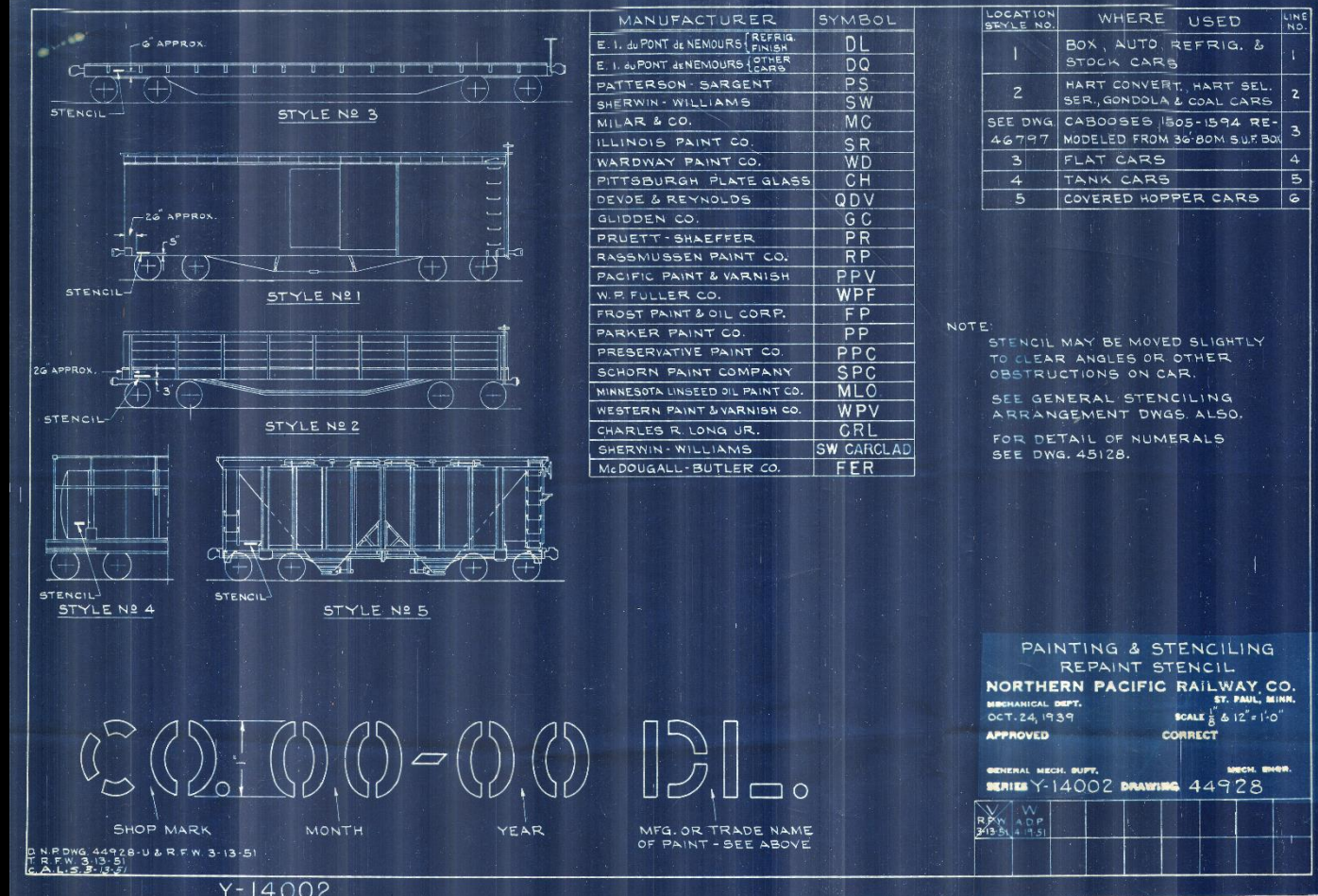
- The Basics – 5 minutes
- Lettering Typefaces – 10 minutes
- Painting & Lettering Drawings – 25 minutes
- Intermission – 5 minutes
- Builders Photos – 35 minutes
- Monads – 5 minutes
- NORTHERN PACIFIC – 5 minutes
- Slogans – 5 minutes



The Basics



- Railway Name
- Monad
- Slogan
- Reporting Mark/Car Number
- Copy data (left), Dimension data (right)
- Small stencil lettering – 1", 1.5" and 2"



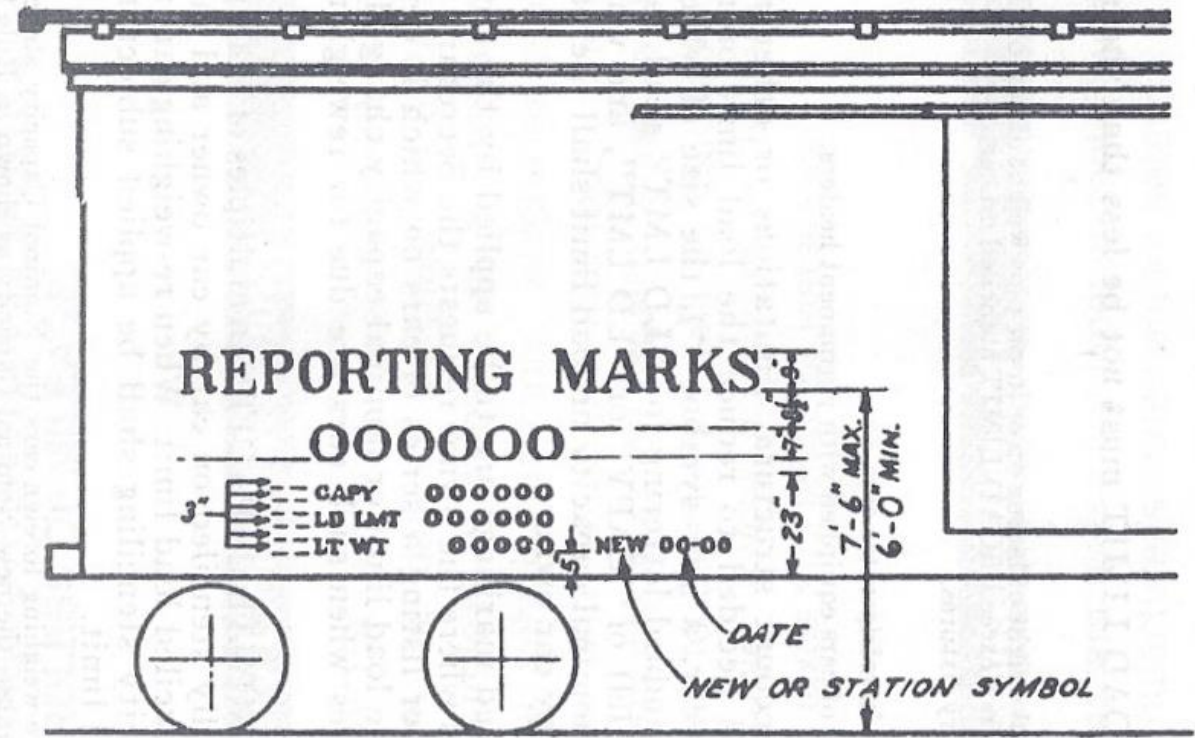
- NP Painting & Stenciling Drawing will specify a drawing
- Stencil Drawing will show outline, size, location, and additional details
- In this case, previous slide drawing 46104 specified drawing 44928, shown above

INTERCHANGE RULES

Published by
The Association of American Railroads
59 East Van Buren St., Chicago, Ill. 60605

1969

Printed in U. S. A.



Marking of Freight Cars to Show Nominal Capacity and Load Limit

AAR Rule 30 – Light-Weighing and Stenciling

Part “F” - Stenciling

AAR Interchange Rules - 1969

- “Should be in accordance with *AAR Standards for Marking and Lettering Cars*”
- 9” Reporting Marks
- 7” Car numbers
- 3” Capacity, Load Limit and Light Weight – with 3” spacing
- 3” New or Station Symbol (station where is was re-weighed)
- 3” Date it was reweighed
- Note – ARA illustrations of standards from 1920’s in the Appendix of this deck



Northern Pacific Lettering Typefaces

Thank you Rick...

NP 1 INCH STENCIL GOTHIC

WROT OR CAST STEEL WHEELS D-3 SPRING

NP 1.5 INCH STENCIL GOTHIC

WROT OR CAST STEEL WHEELS D-3 SPRING

NP 2 INCH STENCIL GOTHIC

WROT OR CAST STEEL WHEELS D-3 SPRING

NP Stencil Gothic Typefaces

- Three sizes used by the NP – 1 inch, 1.5 inch, 2 inch
- All three different – note the differences in the “S”, “R” and “G”
- Trivia – South Tacoma had a unique “stencil” machine, resulting in another variant

EX.W. 10-5 H.13-9

E.W. 9-5 H.14-6

I.L. 40-6

I.W. 9-0

I.H. 10-6

CU.FT. 3868

BLT. 7-44

EX.W. 10-8

H.13-9

E.W. 9-6

H.14-5

I.L. 50-6

I.W. 9-6

I.H. 10-7

CU.FT.5094

BLT. 1-65

NP Dimensional Data Typeface

- Always on the RIGHT side of the car
- 2" in height, per AAR
- Typeface was unique to NP
- Mid – 1960s they start dropping the use of the periods

CAPY. 100000

LD. LMT. 130200

LT. WT. 38800

LR. 1-56

NP Capacity Data Typeface

- Always on the LEFT side of the car
- 3" in height, per AAR
- Typeface was unique to NP
- Mid – 1960s they start dropping the use of the periods

All different

w

W

W

W

W

s

S

S

S

S

N.P. N.P.R. 01234

N.P. N.P.

N.P.R.

NP 01234

NP 01234



NP End Numerals

- Unique typeface for end-of-car lettering
- 3 and 4 inches in height
- Typeface somewhat like “Helvetica” shows up in the 1960s

shorter

0123456789

tall/thin

0123456789

tall/wider

0123456789

N.P. N.P. NP N.P

THESE DOORS MUST BE
UP BEFORE CAR IS MOVED

DOORS MUST BE CLOSED BEFORE CAR IS MOVED

DOORS MUST BE CLOSED BEFORE CAR IS MOVED

N O R T H E R N P A C I F I C

N O R T H E R N P A C I F I C

N O R T H E R N P A C I F I C

N O R T H E R N P A C I F I C

N O R T H E R N P A C I F I C

N O R T H E R N P A C I F I C

N O R T H E R N P A C I F I C

N O R T H E R N P A C I F I C

N O R T H E R N P A C I F I C

N O R T H E R N P A C I F I C

- Unique typeface for gondolas and hoppers
- Note - two sides not to scale to each other
- Reporting marks and car numbers – 7 inch height, three variations here
- NORTHERN PACIFIC – 6.5 inch height, in a cornucopia of styles... (why?)

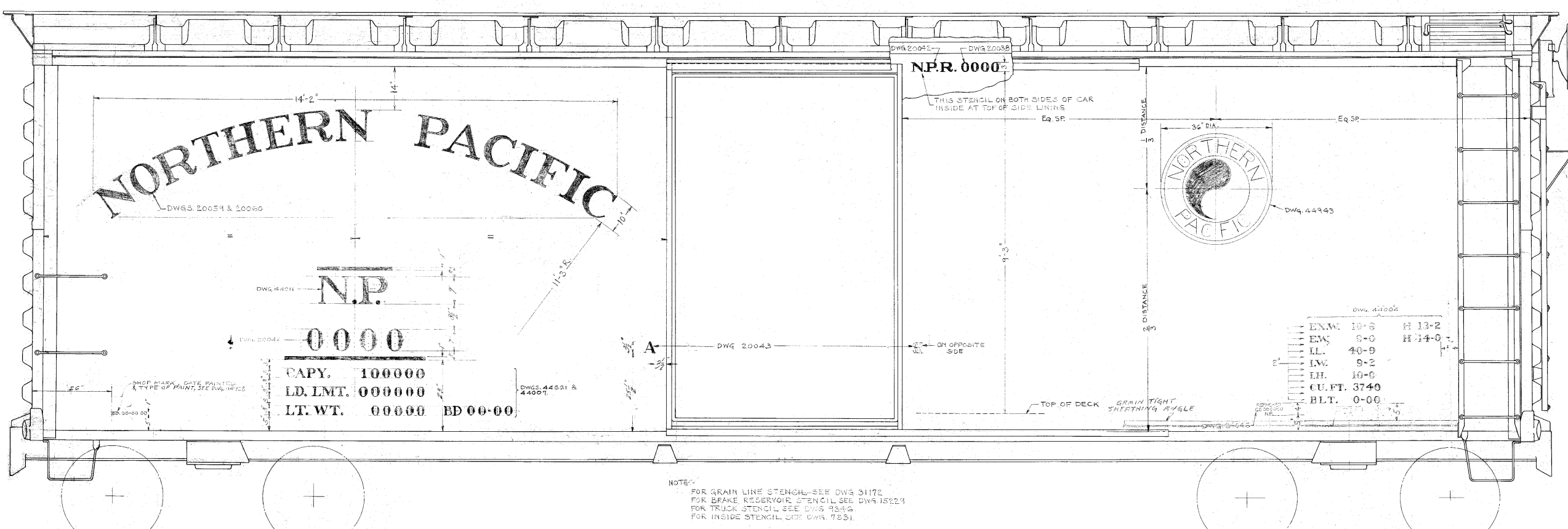
NP Gondolas & Hoppers

Typeface developed by Rick Leach



Painting & Stenciling Drawings

Thank you George and Kent...



NP 9480-9999

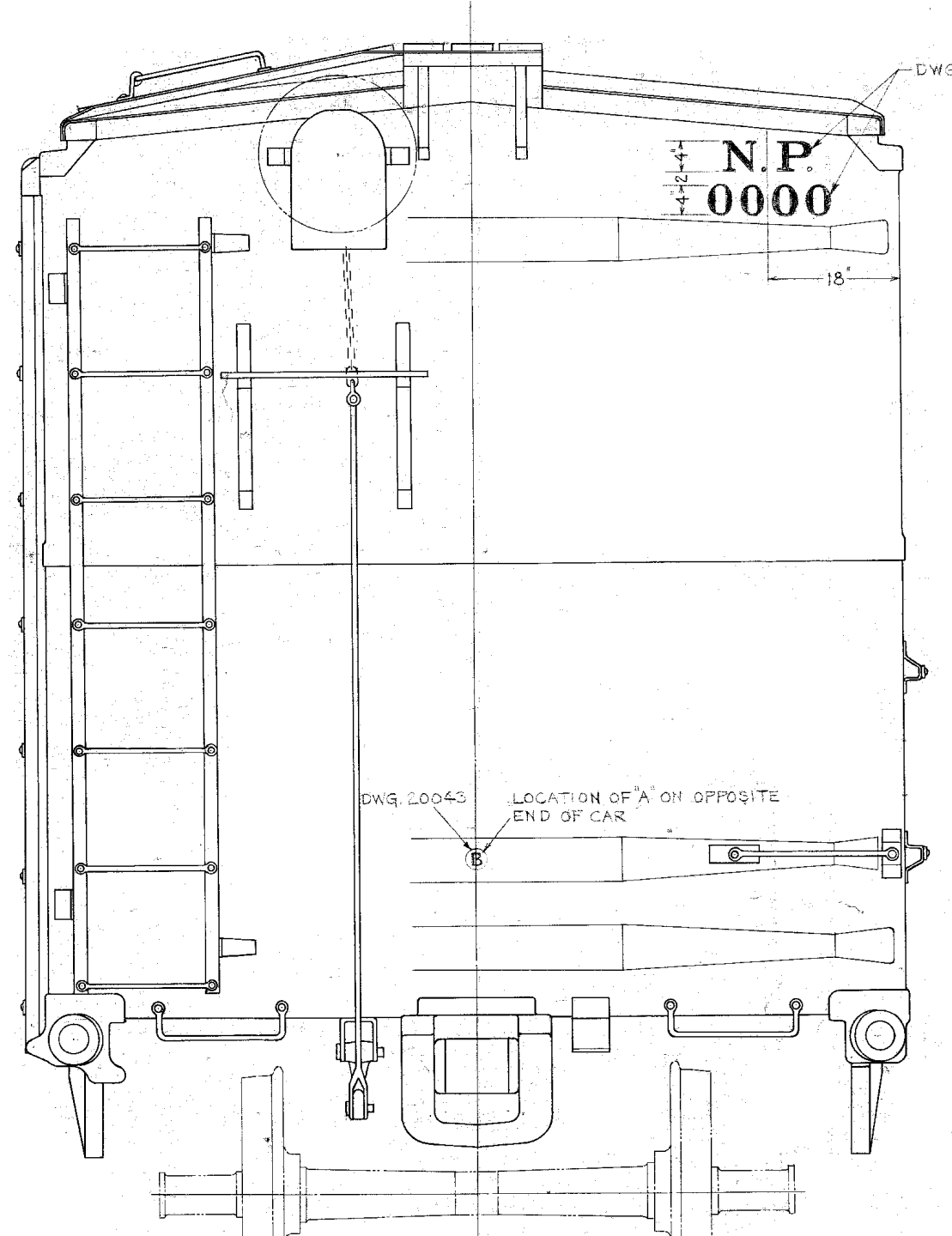
Boxcar, 40'

Painting & Stenciling Drawing

Original – 1937, Revision - 1939

Larry Schrenk Collection

- **Arched NORTHERN PACIFIC**
- **Note road name, reporting marks, car number and CAPY all aligned to a center line under the "N"**
- **36" Monad, up 2/3 from the bottom of side**
- **Note also paint code, repacked, and notes for grain lines**
- **A/B door initials (will change soon to L and R). 3.5"**

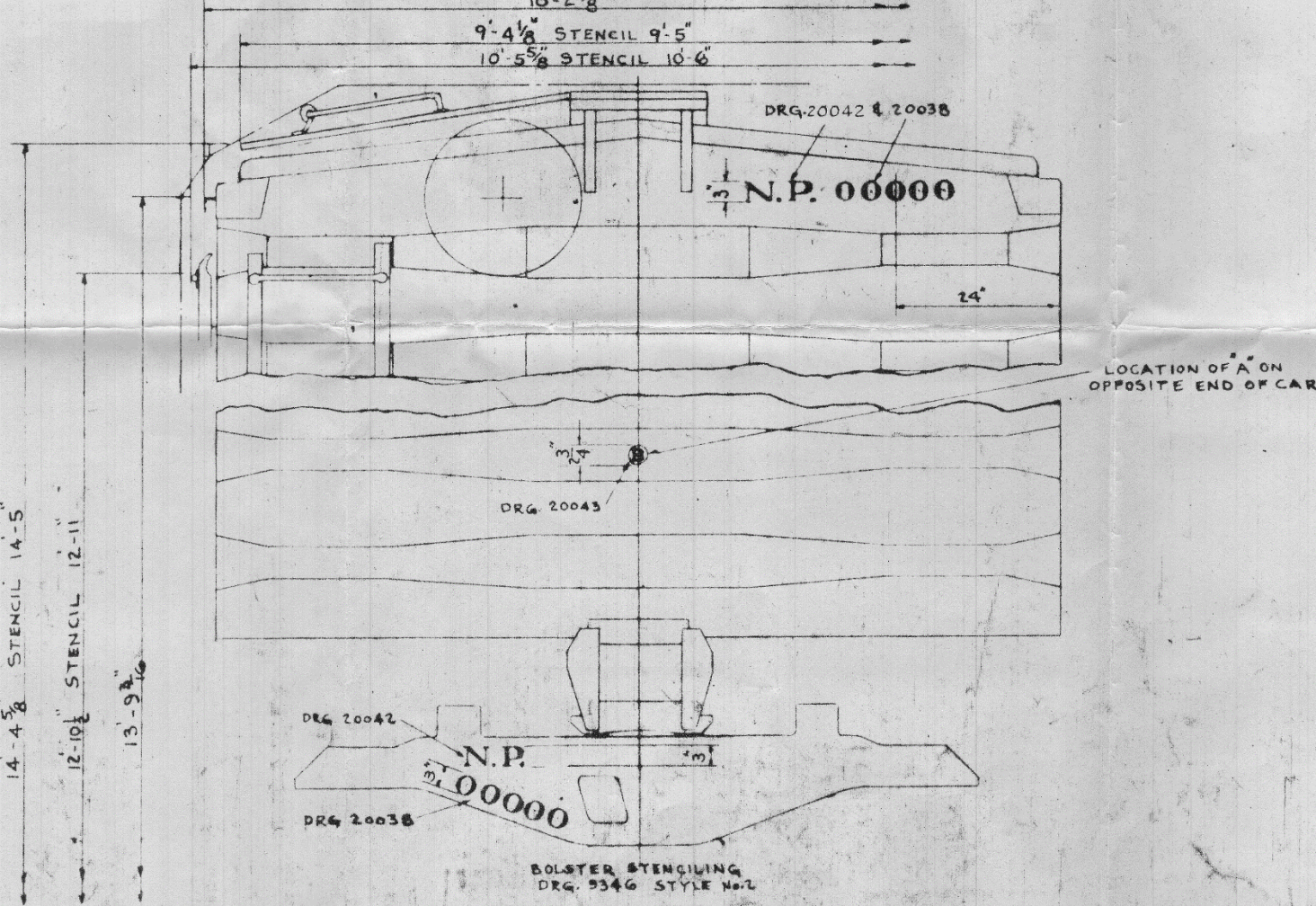


NP 9480-9999
Boxcar, 40'
Painting & Stenciling Drawing
Original – 1937, Revision - 1939

- 4" reporting marks and car number, NP letters over the car number
- "B" initial for Brake end, "A" for other
- No wheel, spring travel, or other information

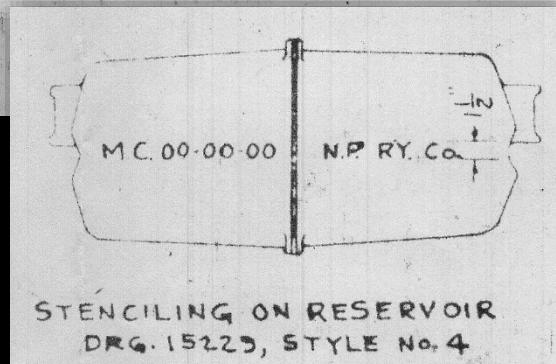
NP 24500-24953, 25000-25999
Boxcar, 40'
Painting & Stenciling Drawing
Original – 1947, Revision - 1948

- Ownership stencil or plate now specified in upper left
- Otherwise, left side stays the same
- “LIFT HANDLE...” now added to door, and L/R side initials
- Interior – grain-fill lines, reporting mark and car number
- First slogan appears! *Main Street of the Northwest*



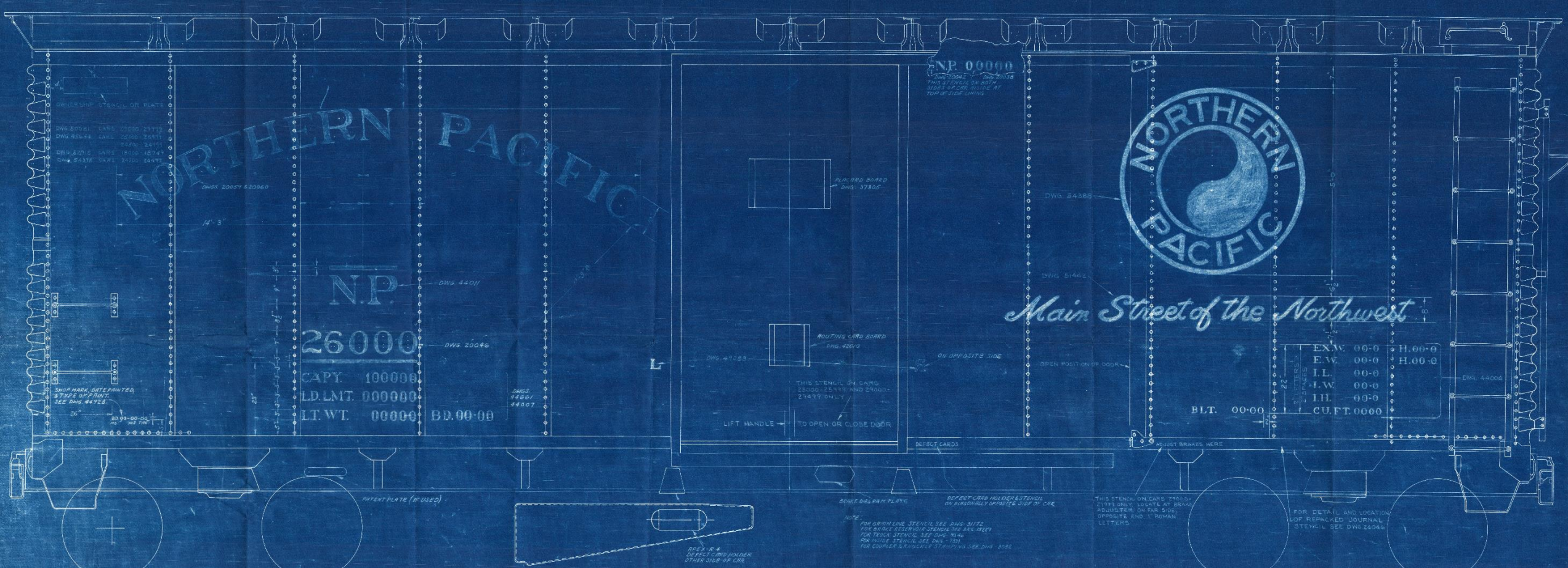
**NP 24500-24953, 25000-25999
Boxcar, 40'
Painting & Stenciling Drawing
Original – 1947, Revision - 1948**

- Reporting marks changed – side by side, and 3" height
- 1.5" stencils on air reservoir
- 3" lettering on truck bolster
- "IW WROT STEEL WHEELS" and spring travel stencil also specified



NOTE:-
CARS (24750-24999) ONLY TO BEAR
STENCIL PER DWG 45335 STYLE NO. 1
READING AS FOLLOWS:-
"IW WROT STEEL WHEELS"
STENCIL TO BE APPLIED ON BOTH ENDS,
CENTRALLY LOCATED ON THIRD MAJOR
CORRUPTION FROM BOTTOM OF STEEL
END.

FOR SPRING TRAVEL DESIGNATION STENCIL
AND LOCATION SEE DWG. 51834.

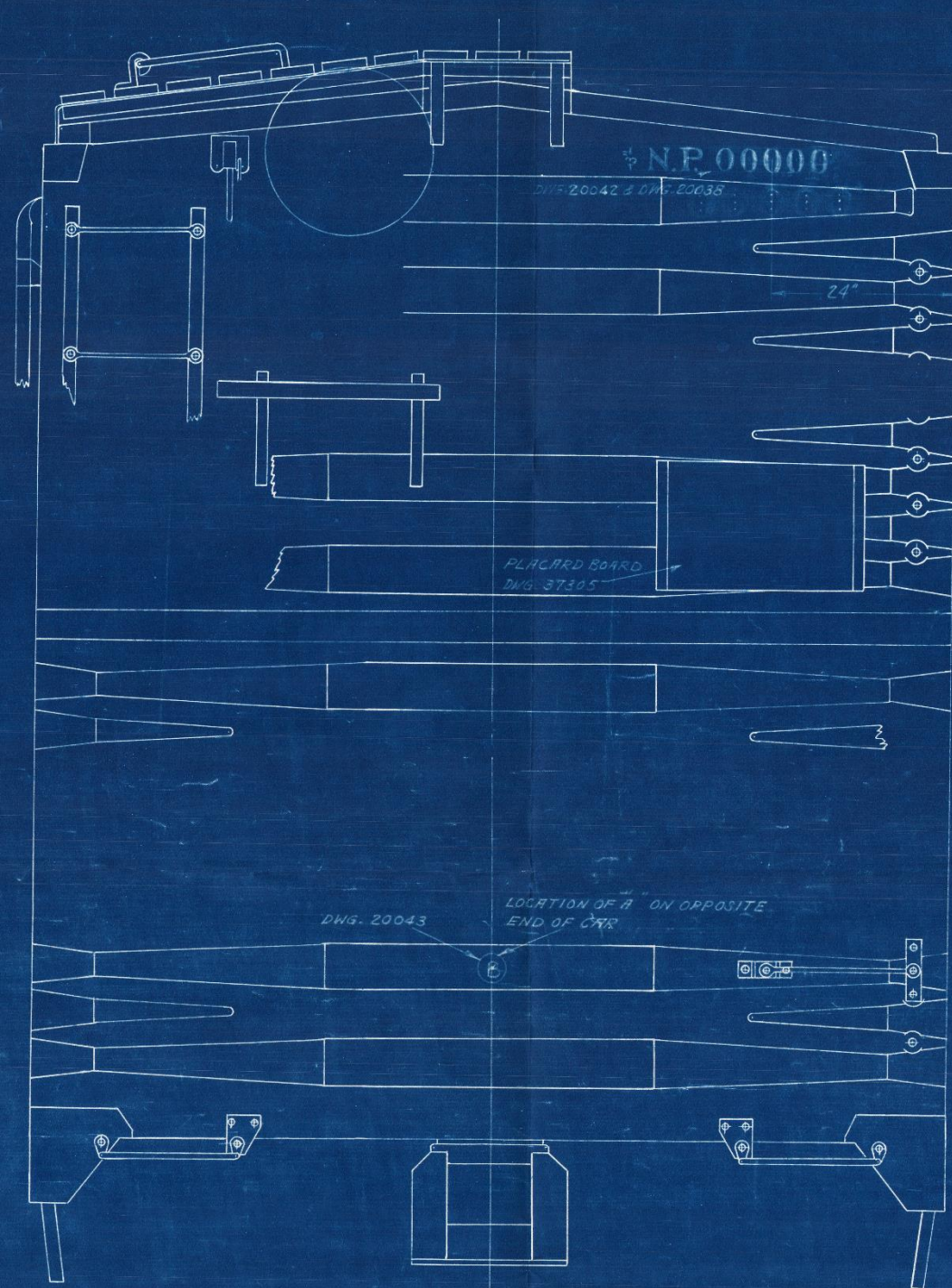


NP 18000-29000

Boxcar, 40'

Painting & Stenciling Drawing
Original – 1941, Revision - 1951

- Left side remains the same, however right side...
- Monad grows from 36" to 60"
- BLT date gets moved out to the left



NOTE:

STENCIL PER DWG. 45333, STYLE NO. 1
 READING "IW. WROT STEEL WHEELS" TO
 BE APPLIED ON BOTH ENDS OF CAR,
 CENTRALLY LOCATED ON THIRD MAJOR
 CORRUGATION FROM BOTTOM OF STEEL
 END. THIS STENCIL TO BE APPLIED TO
 THE FOLLOWING SERIES OF CARS ONLY:-
 24750-24999 100M. BOX CARS
 25750-25999 100M. BOX CARS
 29500-29999 100M. BOX CARS

WHEN ONE OR MORE PAIRS OF IW WROT STEEL
 WHEELS ARE APPLIED TO CARS IN SERIES
 18000-18749 THEY MUST BE STENCILED ON
 EACH END AS PER DWG. 5032G. LOCATE
 STENCIL ON THIRD MAJOR CORRUGATION FROM
 BOTTOM OF STEEL END TO READ:-
 "IW WROT STEEL WHEELS
 NEW STD."

NOTE:

FOR SPRING TRAVEL DESIGNATION
 STENCIL AND LOCATION, SEE DWG. 51834.

NP 18000-29000

Boxcar, 40'

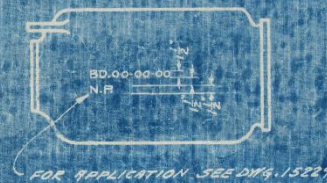
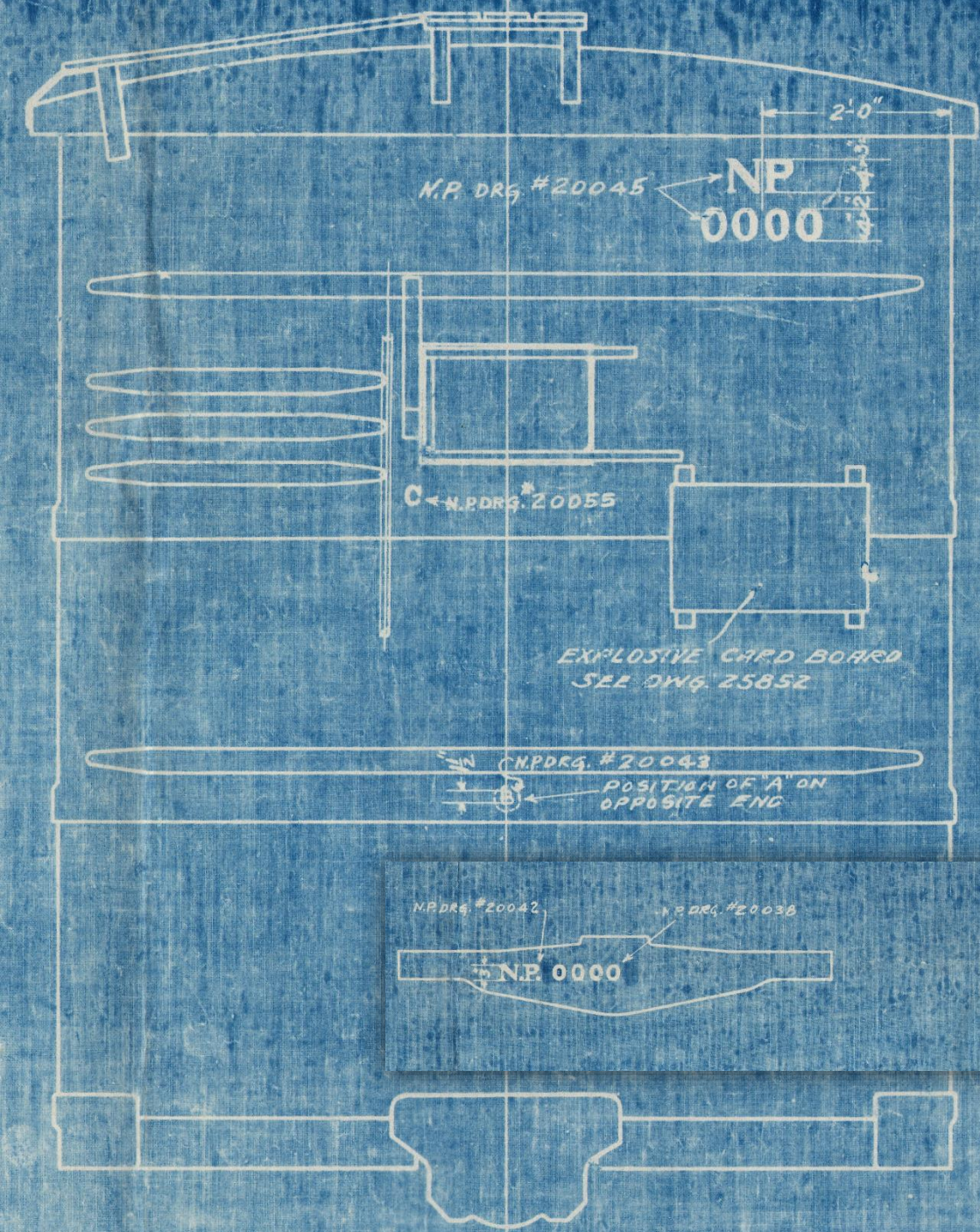
Painting & Stenciling Drawing

Original - 1941, Revision - 1951

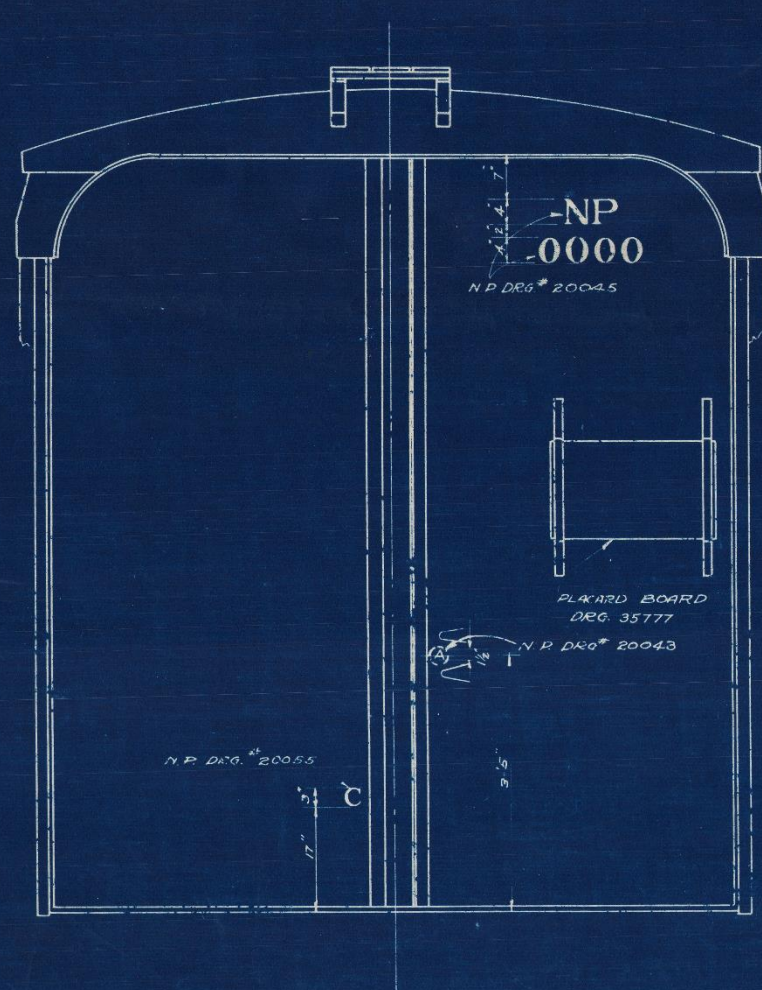
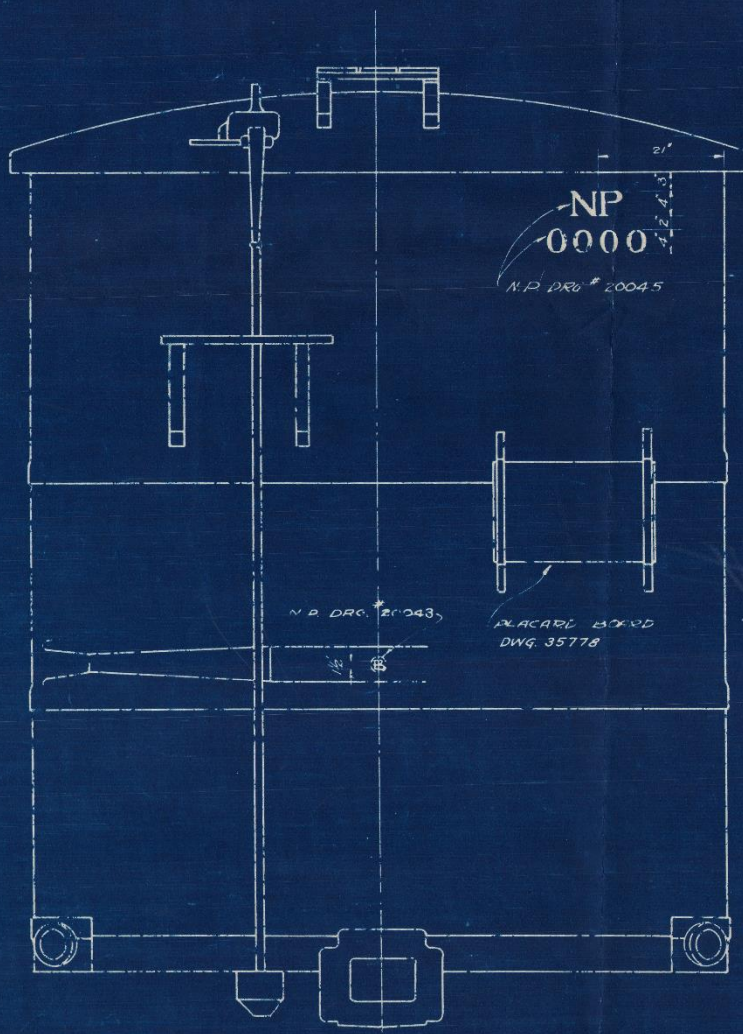
- **3" reporting mark and car number**
- **Note side-by-side, not stacked**

NP 5000-5999, 30000-30988
Boxcar, 50'
Painting & Stenciling Drawing
Original – 1927, Revision - 1951

- 4" reporting mark, car number
- Stacked one above the other unlike other 1951 drawing update
- Truck bolster drawing different

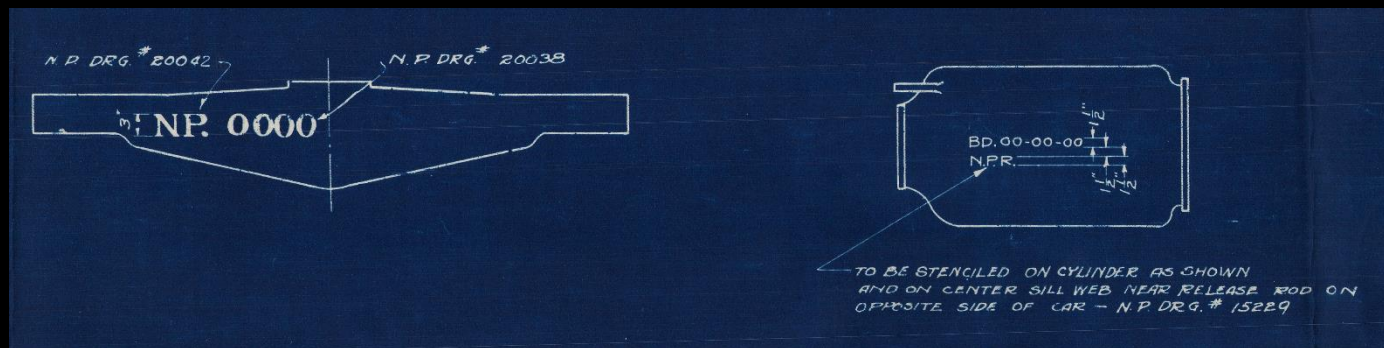


- Very similar to previous car (better blueprint copy...)
- NORTHERN PACIFIC letters grouped differently
- TRANSFER CARDS on the car, not doors
- "L" and "R" next to doors are again 3.5", unique drawing

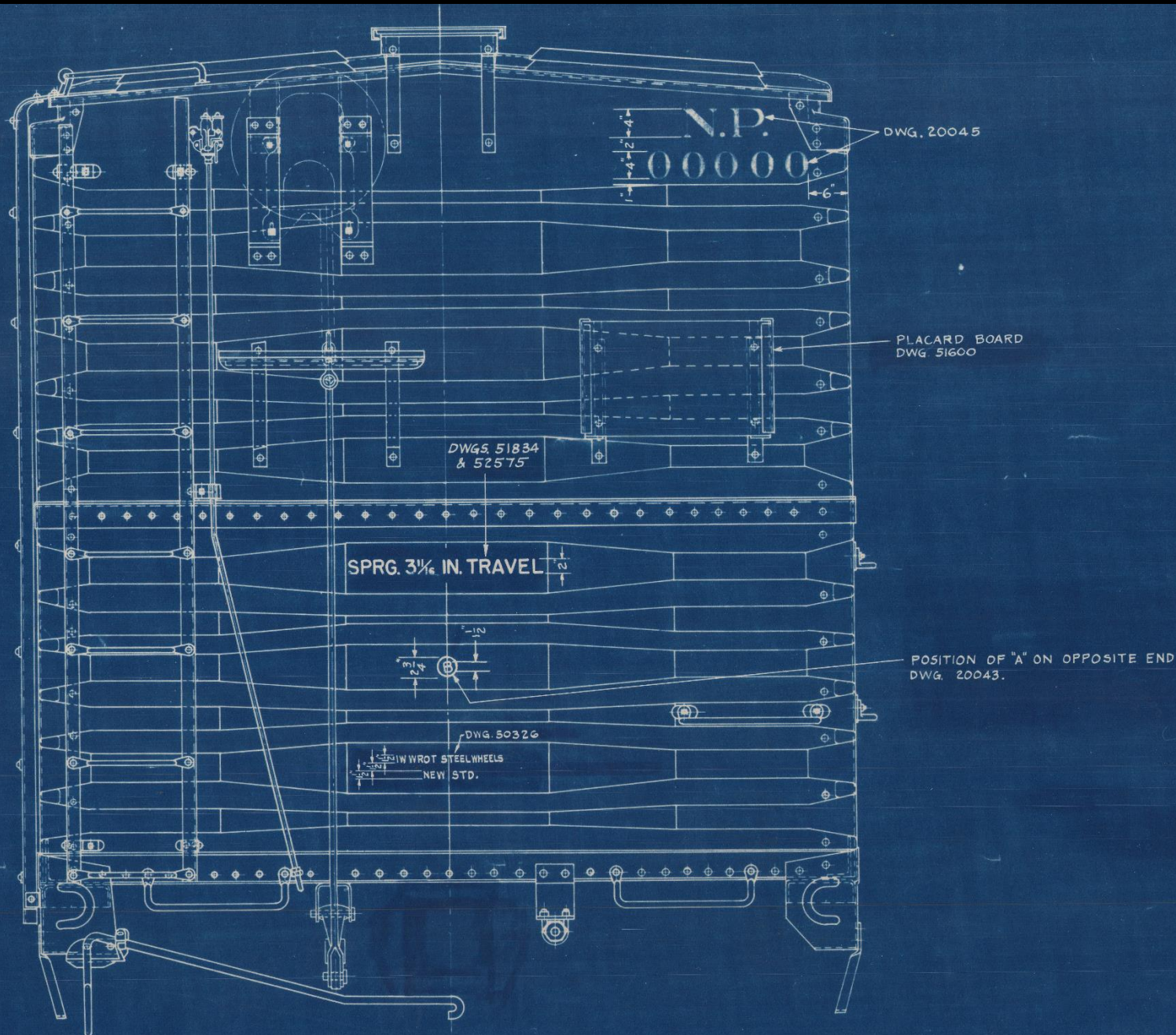


NP 4700-4999 Boxcar, 50' Painting & Stenciling Drawing Original – 1930, Revision - 1951

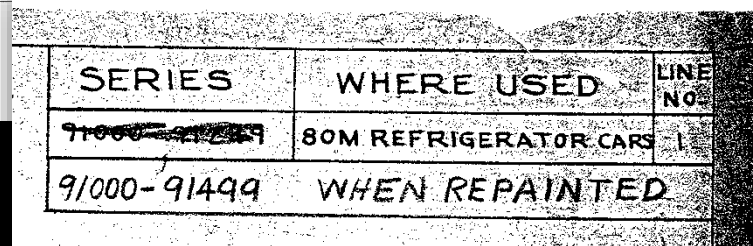
- 4" reporting mark, 4" car number
- Stacked one above the other unlike 40' boxcar 1951 drawing update
- Truck bolster drawing also different
- No wheel, spring travel, or other information despite 1951 date
- "C" letter, unique to end with doors?



NP 91250-91499
Reefer, 40'
Painting & Stenciling Drawing
Original – 1949, Revision - 1950

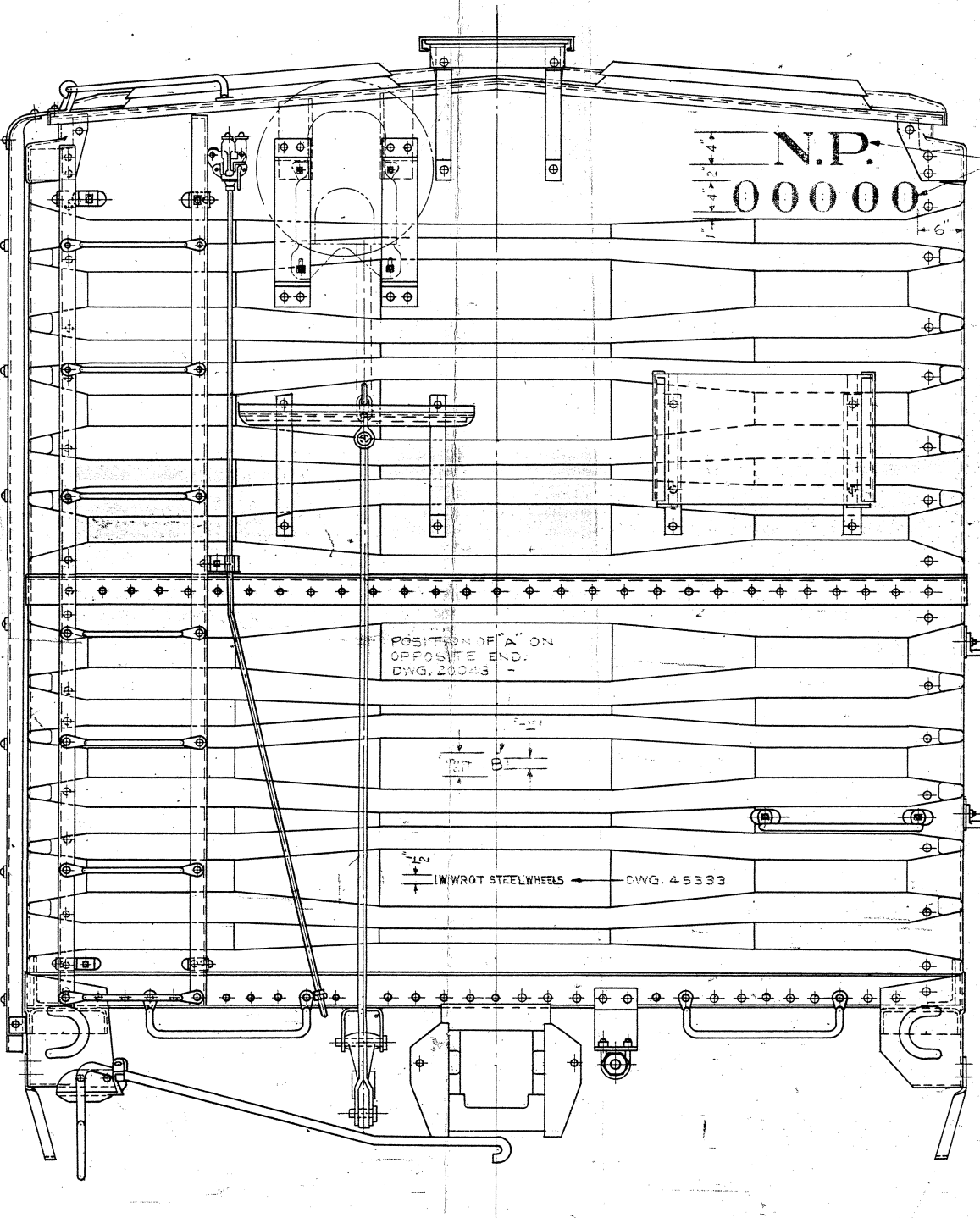


- 4" reporting mark, car number
- 2" SPRG TRAVEL stencil
- 1.5" IW WROT STEEL WHEELS stencil



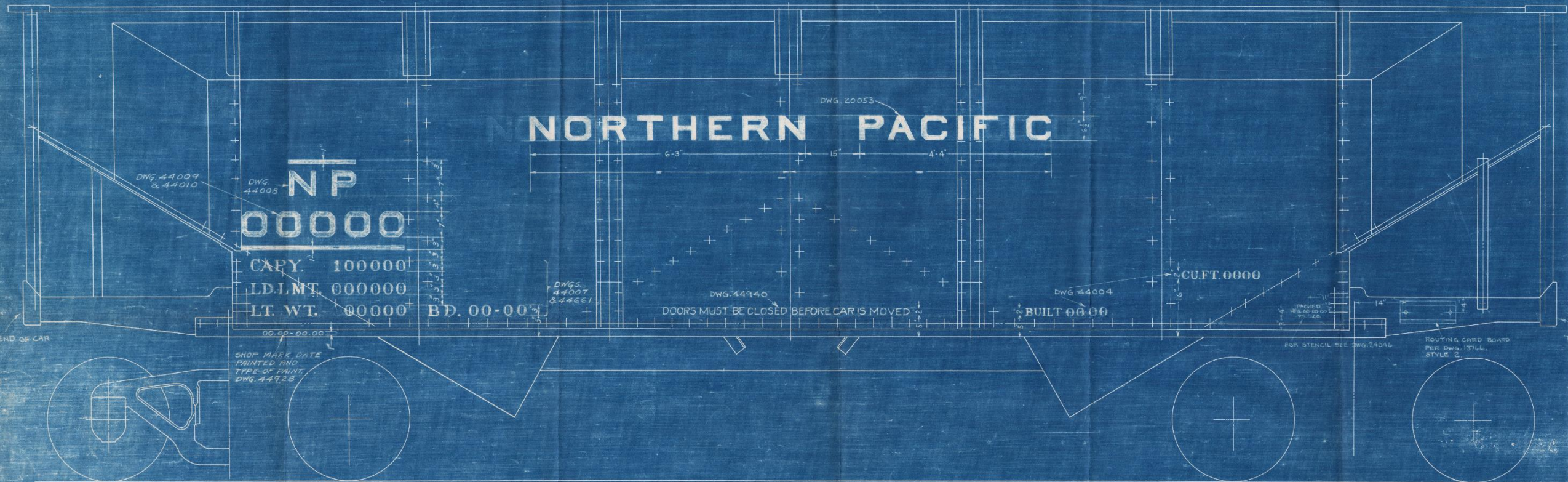
Simonson Collection

- Reefer, so 48" NP Monad
- Appears to be transition from MSNW to "SCENIC ROUTE OF THE..."
- SCENIC ROUTE... height is 6"; detailed positioning relative to Monad
- 2" Stencil Gothic for "FANS STAGE ICING..."



NP 91000-91499
Reefer, 40'
Painting & Stenciling Drawing
Original – 1947, Revision - 1953

- 4" reporting mark, car number
- Interesting, no spring travel stencil
- 1.5" IW WROT STEEL WHEELS stencil



Saint Paul, Minnesota.
May 31, 1950

File 1154

SHOP SUPERINTENDENTS:
MASTER MECHANICS:

Heretofore the stencils "NORTHERN PACIFIC"
on Hopper Cars in series 70050-70199 and 70200-70899
have been applied of different lengths, necessitating
separate stencils.

Attached are prints of Drawings
38087-P and 44945-C which have been revised to show
stencils of same length on the two lots of cars, and
when such cars are repainted the stencils should be
applied in accordance with these revised drawings.

Please have prints of previous issues de-
stroyed.

J. Moody
Supt. Car Department

N. P.

00000

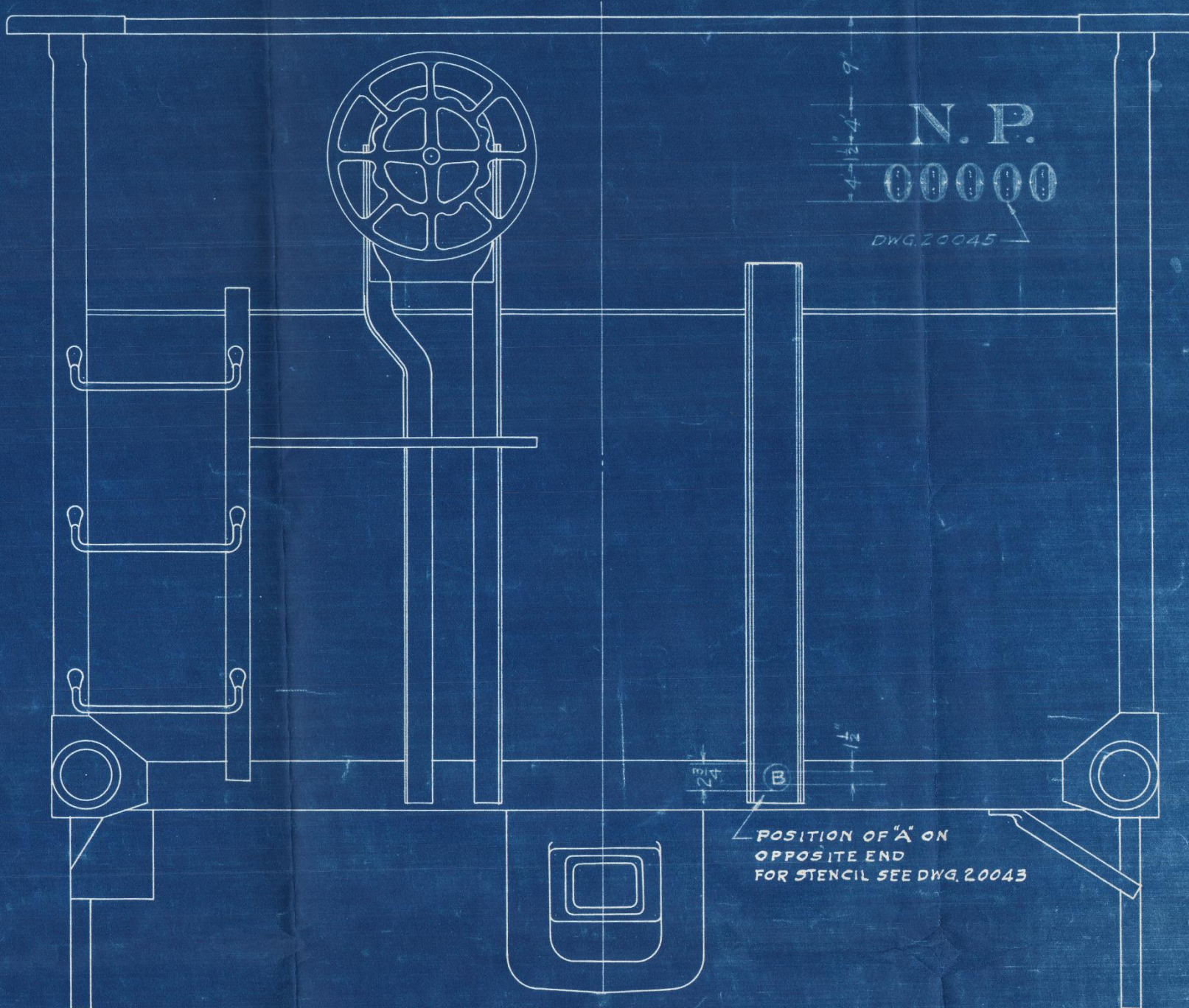
FOR STENCIL SEE DWG. 20045

POSITION OF "A" ON
OPPOSITE END.
FOR STENCIL SEE DWG. 20043

NP 70050-70199 Hopper, 39' Painting & Stenciling Drawing Original - 1932, Revision - 1950

- 4" reporting mark, car number
- Not much else
- Why this revision? Cover letter

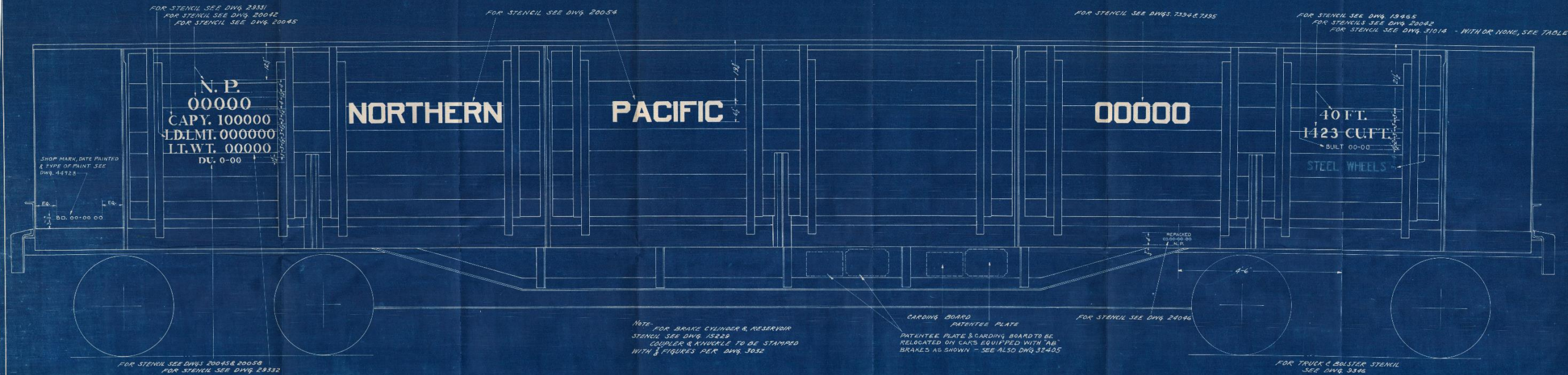
- 6.5" tall NORTHERN PACIFIC, centered.
- 7" road initial and car number
- 2" DOORS MUST BE CLOSED...
- Left/Right position of Copy lettering is somewhat ambiguous, but vertical is fully specified
- Note use of term "Ownership Stencil"



N. P.
000000
DWG. 20045

NP 70200-70899
Hopper, 36'
Painting & Stenciling Drawing
Original – 1939, Revision - 1950

- 4" reporting mark, car number
- Not much else



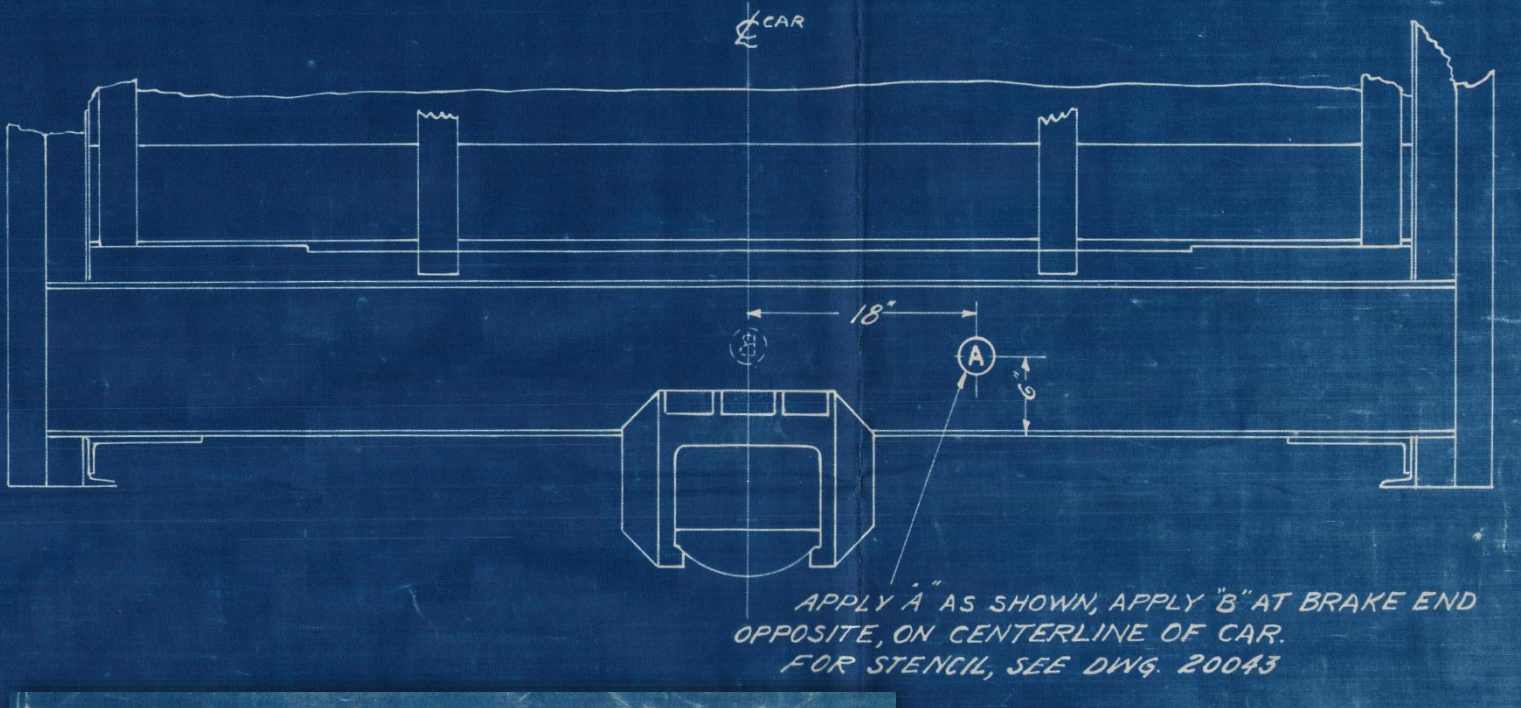
NP 86750-86849, 86850-86949

Coal – Hart Conv, 40’

Painting & Stenciling Drawing

Original – 1927, Revision - 1951

- 6.5” tall NORTHERN PACIFIC, on panels
- 4” Road initial and number – relatively small
- Road number appears again on the right
- No “DOOR MUST...” stencil, other oddities in scheme
- Gone by 1960, so “old school” scheme probably applied until the end



STEEL WHEELS	SERIES	WHERE USED
NONE	86750-86849	100 M. HART CONV.
WITH	86850-86949	100 M. HART CONV.

"A"	REISSUED	6-21-27	PJT.
B-	"	11-15-39	AJT.
C-	"	4-17-45	H.J.C.
D-	"	5-21-45	L.O.
E-	"	10-10-51	R.J.

PAINTING & STENCILING
BODY

NORTHERN PACIFIC RAILWAY CO.
MECHANICAL DEPT. ST. PAUL, MINN.
APR. 4-1927

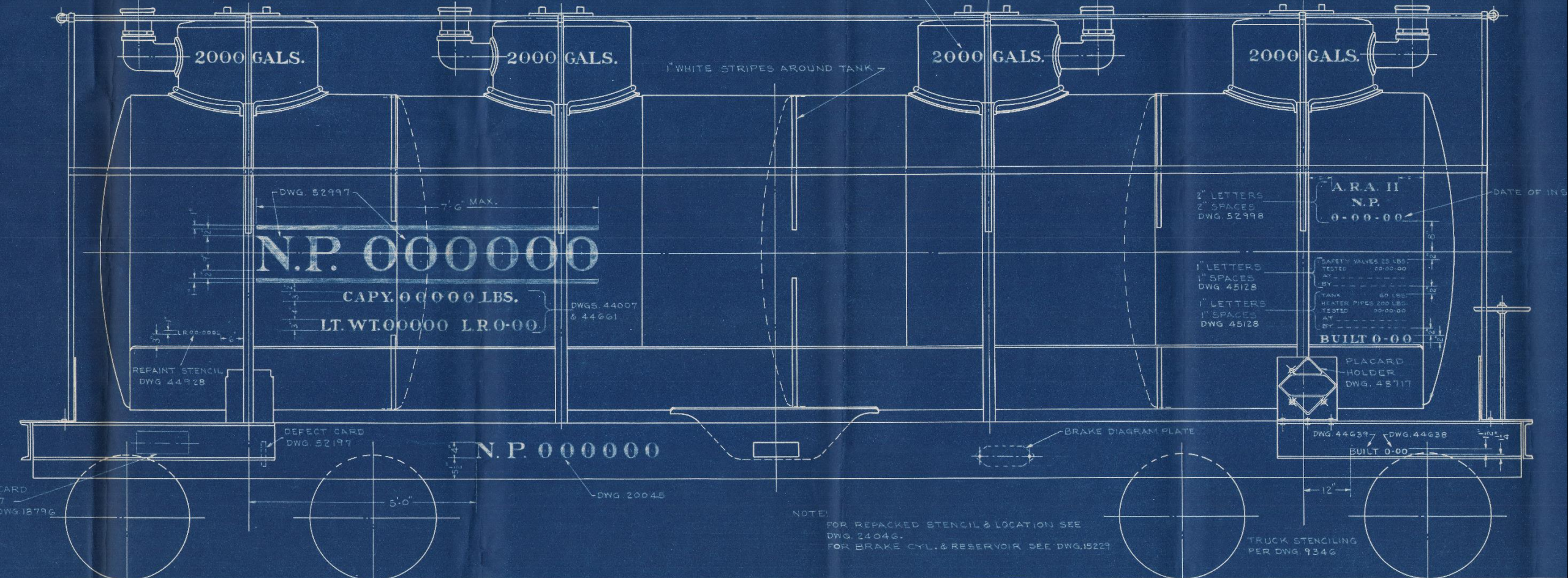
SCALE
CORRECT

APPROVED

GENERAL MECH. SUPT. MECH. ENGR.
SERIES T-898 DRAWING 31011-E

NP 86750-86849, 86850-86949
Coal - Hart Conv, 40'
Painting & Stenciling Drawing
Original - 1927, Revision - 1951

- A/B end stencil, nothing else spec'ed
- Not much else
- A few notes on drawing elements...



NP 101136-101149, 101143-101149

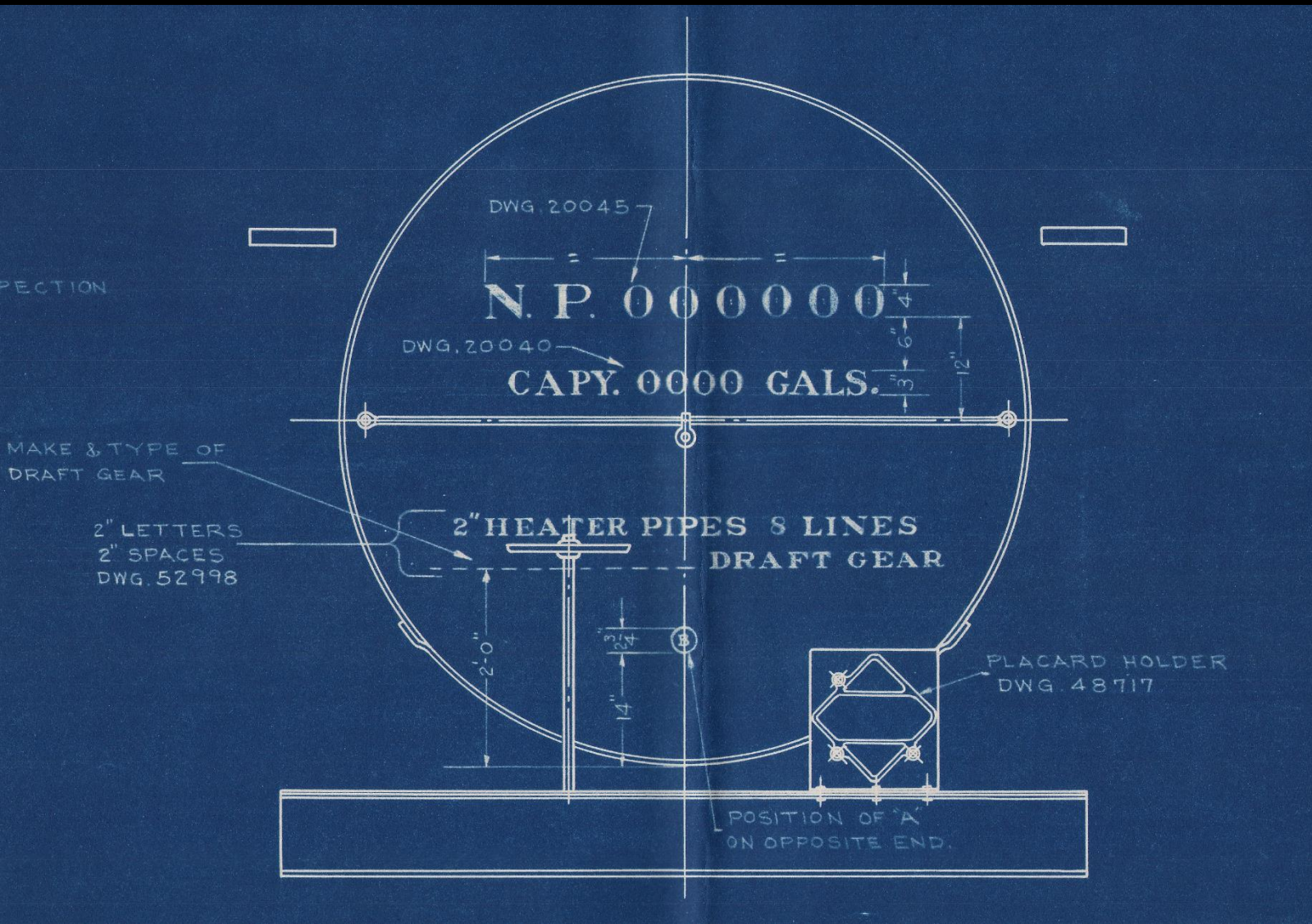
8000 Gal Tank

Painting & Stenciling Drawing

Original - 1912, Revision - 1949

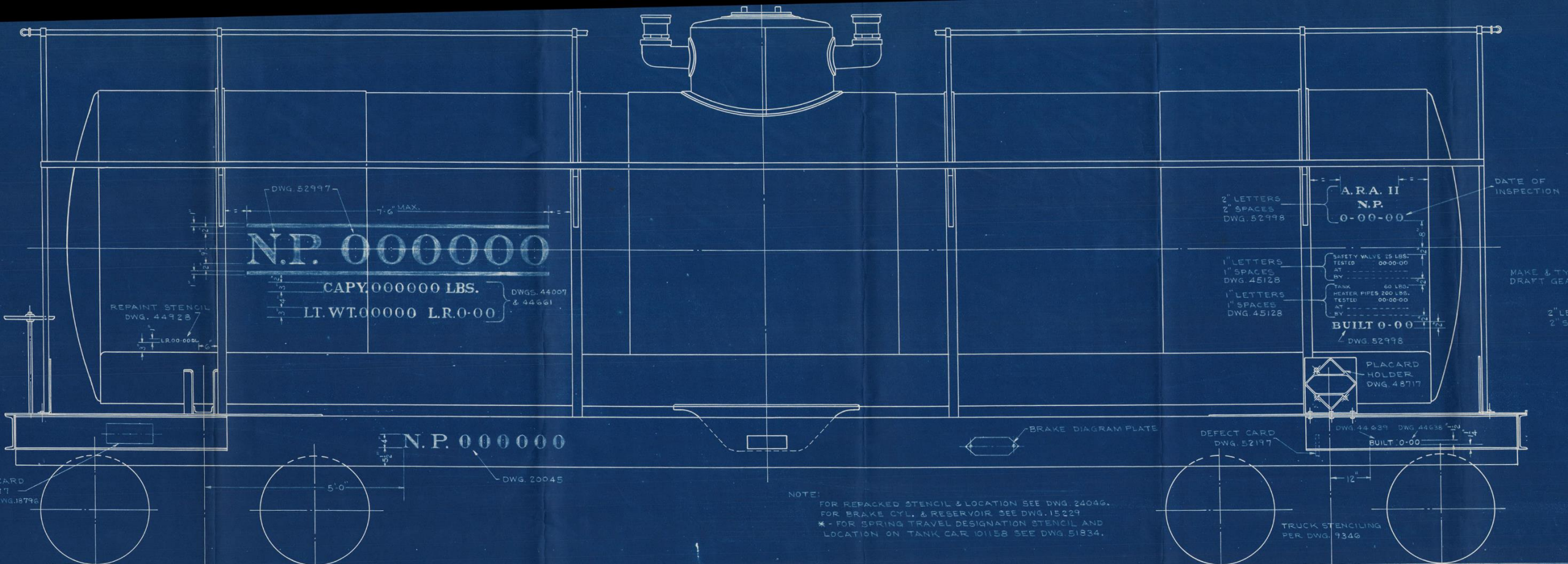
Simonson Collection

- No NORTHERN PACIFIC, Monad or slogan
- 9" reporting mark AND car number – relatively large, with long 1" top/bottom lines
- Reporting mark and car number also appear on frame, 4" (Drawing 20045, which is standard end reporting mark and car number)
- Lots of Safety/Testing data to the right
- Interesting - 1" white stripes around tank



NP 101136-101149, 101143-101149
8000 Gal Tank
Painting & Stenciling Drawing
Original – 1912, Revision - 1949

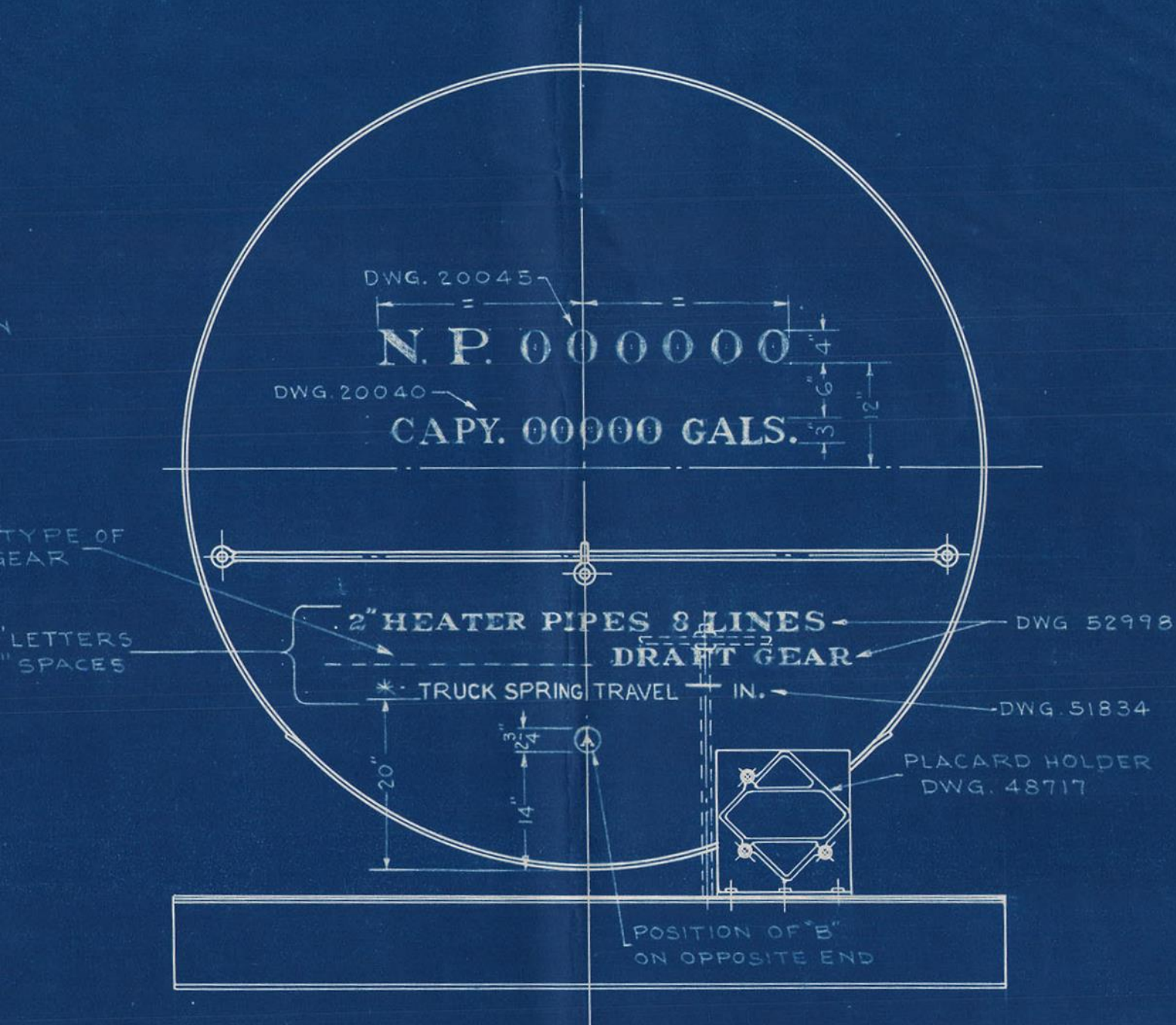
- 4" reporting mark and car number
- 3" Capy, on end
- 2" "HEATER PIPES..." lettering



NP 101150-101159 **12000 Gal Tank** **Painting & Stenciling Drawing** **Original – 1912, Revision - 1949**

- No NORTHERN PACIFIC, Monad or slogan
- 9" reporting mark and car number – relatively large, with long 1" top/bottom lines
- Reporting mark and car number also appear on frame, 4" (Drawing 20045, which is standard end reporting mark and car number)
- Lots of Safety/Testing data to the right

NP 101150-101159
12000 Gal Tank
Painting & Stenciling Drawing
Original – 1912, Revision - 1949



- 4" reporting mark and car numbers
- 3" Capy.
- 2" "HEATER PIPES..." lettering
- Included TRUCK SPRING TRAVEL



Agenda

- The Basics – 5 minutes
- Lettering Typefaces – 10 minutes
- Painting & Lettering Drawings – 25 minutes
- **Intermission – 5 minutes**
- **Builders Photos – 35 minutes**
- **Monads – 5 minutes**
- **NORTHERN PACIFIC – 5 minutes**
- **Slogans – 5 minutes**

1920-1926 ARA Lettering Guidelines

NOTES

HOUSE CARS MORE THAN 12 FEET FROM TOP OF RAIL TO EAVES TO SHOW HEIGHT AND WIDTH AT EAVES AS NEAR THE BOTTOM AS CONVENIENT.

FOR HOUSE AND GONDOLA CARS TRIPLE VALVE, SIZE OF COUPLER, STYLE OF COUPLER ATTACHMENT, KIND OF BRAKE BEAMS AND KIND OF WHEELS TO BE SHOWN ON SIDE OF CAR AT END OR ON END OF CAR ABOVE COUPLER.

FOR FLAT CARS TRIPLE VALVE, SIZE OF COUPLER, STYLE OF COUPLER ATTACHMENT, KIND OF BRAKE BEAMS AND KIND OF WHEELS TO BE SHOWN ON THE SIDE OF CAR IN THE BEST AVAILABLE POSITION OFFERED BY THE CONSTRUCTION OF THE CAR.

TRUCK BOLSTERS TO SHOW SIZE OF JOURNAL AND LETTERS "MCB" IF MCB AXLES ARE USED OR DISTANCE C TO C OF JOURNAL IF AXLES ARE NOT MCB. INITIALS OF ROAD ON ONE SIDE OF TRUCK BOLSTER OR TRUCK TRANSOM.

SUBSTITUTE "STATION SYMBOL" FOR "NEW" WHEN CAR IS REWEIGHED.

TRUST MARKS, PATENT MARKS AND OTHER PRIVATE MARKS SHOULD BE 1" LETTERS OR FIGURES.

THE REPORTING MARKS ASSIGNED BY THE ASSOCIATION OF TRANSPORTATION AND CAR ACCOUNTING OFFICERS SHOULD BE PLACED BETWEEN THE HORIZONTAL BARS. IF DESIRED, THE INITIALS OF OWNER MAY BE PLACED ABOVE THE BARS.

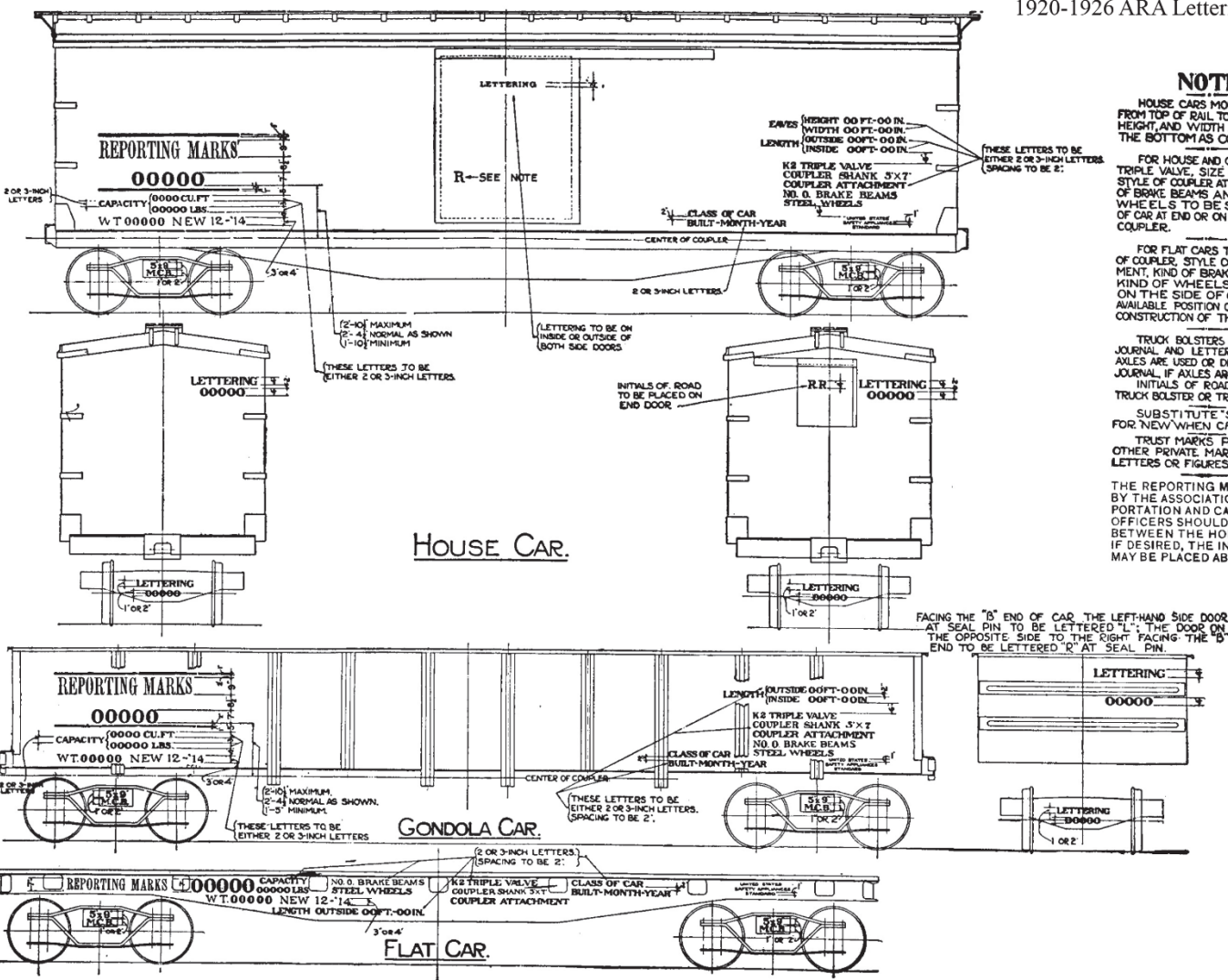
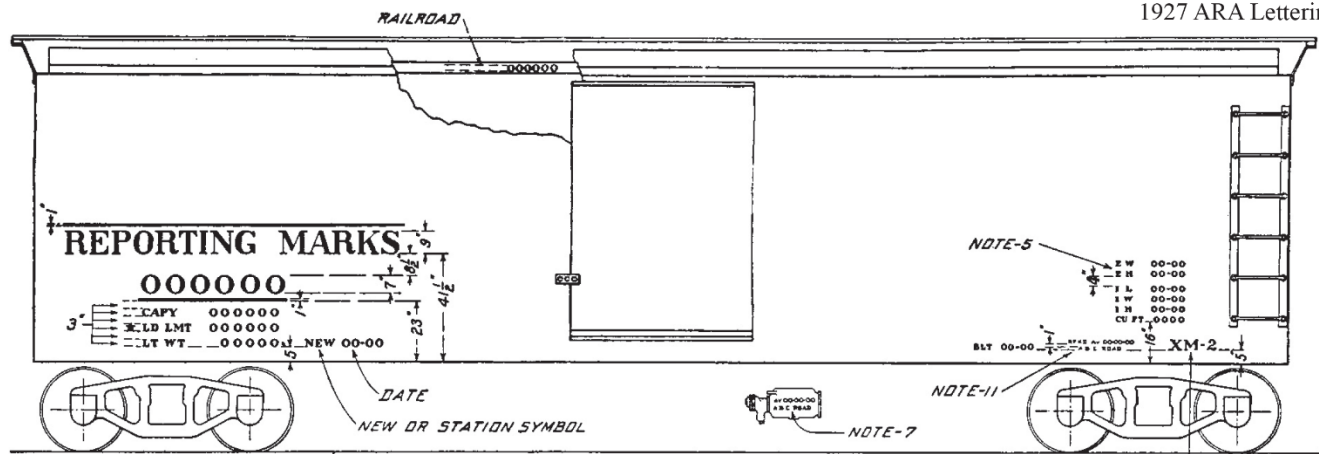


FIG. 591—DIAGRAM SHOWING AMERICAN RAILWAY ASSOCIATION STANDARD LETTERING AND MARKING OF FREIGHT CARS.

- Lots of standards go way back to the 1920s or earlier; examples...
- 4" end lettering
- 9" reporting marks
- 7" car number



NOTE-1: SIZES AND SPACING OF LETTERS AND FIGURES: 7" LETTERS MAY BE USED FOR REPORTING MARKS. ALL LETTERING AND SPACING 2" UNLESS OTHERWISE SPECIFIED.

NOTE-2: THE REPORTING MARKS ASSIGNED BY THE ASSOCIATION OF TRANSPORTATION AND CAR ACCOUNTING OFFICERS SHOULD BE PLACED BETWEEN THE HORIZONTAL BARS. IF DESIRED THE NAME OR INITIALS OF OWNER MAY BE PLACED ABOVE THE BARS.

NOTE-3: ARRANGEMENT OF REPORTING MARKS, CAPACITY, LOAD LIMIT, LIGHT WEIGHT AND DATE SHOULD BE MAINTAINED AS SHOWN EXCEPT THAT THE ENTIRE ARRANGEMENT MAY BE MOVED SLIGHTLY IF NECESSARY TO SUIT CONSTRUCTION OF CAR.

NOTE-4: SYMBOL FOR CLASSIFICATION OF CAR IF USED SHALL BE APPLIED UNDER DIMENSION MARKING IN 4" LETTERS AND FIGURES AT RIGHT ON THE SIDE OF CAR ON A LINE WITH DATE BUILT.

NOTE-5: ON ALL BOX OR OTHER HOUSE CARS STANDING MORE THAN 12 FEET FROM TOP OF 'RAIL TO EAVES, THE HEIGHT AND WIDTH AT EAVES TO BE STENCILED AS SHOWN. WHERE LATITUDINAL RUNNING BOARD IS FLUSH WITH EAVES, THE HEIGHT SHOULD BE GIVEN TO TOP OF LATITUDINAL RUNNING BOARD.

NOTE-6: CAR NUMBER AND INITIALS TO BE STAMPED OR PAINTED ON INTERMEDIATE OR CENTER SILLS AT OPTION OF OWNER.

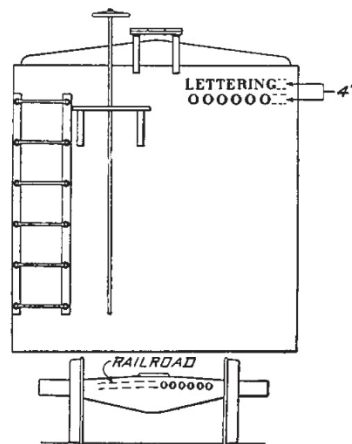
NOTE-7: STENCILING TO CONFORM TO INSTRUCTIONS SHOWN IN INTERCHANGE RULE NO. 60.

NOTE-8: IT IS RECOMMENDED THAT WHEN OWNER DESIRES INFORMATION REGARDING TRIPLE VALVE, COUPLERS, COUPLER ATTACHMENTS, BRAKE BEAMS, STEEL WHEELS, CENTRIFUGAL DIRT COLLECTOR, ETC., SHOWN ON CARS, SUCH INFORMATION BE STENCILED ON THE ENDS OF CARS IF POSSIBLE.

NOTE-9: FACING THE 'B' END OF CAR THE LEFT HAND SIDE OF CAR TO BE LETTERED 'L'; THE OPPOSITE SIDE TO BE LETTERED 'R'; THE LETTERS TO BE APPLIED NEAR SEAL PINS.

NOTE-10: A STAR MUST BE MAINTAINED CLOSE TO LEFT END OF LOAD LIMIT MARKING ON ALL CARS THAT ARE NOT CAPABLE OF CARRYING THE MAXIMUM LOAD LIMIT PERMITTED BY INTERCHANGE RULE NO. 86. THE STAR INDICATES THAT LOAD LIMIT SO MARKED MUST NOT BE CHANGED EXCEPT BY OWNER.

NOTE-11: STENCILING TO CONFORM TO INSTRUCTIONS SHOWN IN INTERCHANGE RULE NO. 66.



1927 ARA Lettering Guidelines

- NP 10,000 series boxcars exhibit much of these standards, on initial paint scheme
- Sure looking forward to Rapido car!

Fig. 489—Diagram Showing American Railway Association Standard Lettering and Marking of Box Cars.